



CAPABILITY STATEMENT

ASHFLEX HOLDINGS



2015

Table of Contents

Company Profile.....	2
The Ashflex Workshop	7
Relevant Experience.....	9
Quality, WHS and Environmental Management.....	11
Quality Management	11
WHS Management	11
Environmental Management	11
Contact Details.....	13
Notes.....	14

Fabrication and Welding Since 1995

www.ashflex.com.au

Company Profile

ASHFLEX HOLDINGS Pty Ltd is an engineering company that provides various professional products and services. This includes welding, heavy steel fabrication, maintenance and installation services as well as specialised various works covering piping, pressure equipment, processing plant equipment and large structural steel items.

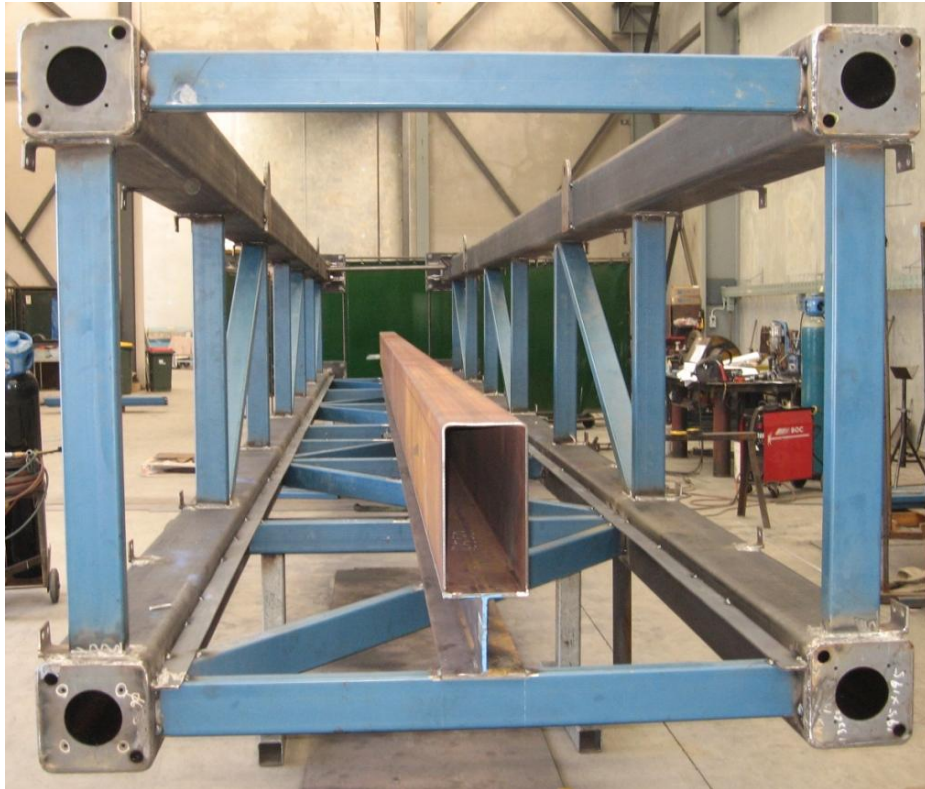
Using the knowledge and experience of our management and highly skilled workforce, this company offers quality services with customer focus always as our top priority. Integrating the customer's requirements into our solutions and products is what sets Ashflex apart from traditional steel workshops.



SERVICES offered include but are not limited to:

- Piping systems to customer specifications using various materials (Carbon Steel, Stainless Steel, Duplex Steels, Chrome-Moly, Inconel, Monel, Copper Nickel, etc.)
- Large structural steel fabrication and erections
- Design and manufacture of pressure vessels and tanks
- Pressure vessel and tank refurbishment and repairs
- Repair of various pressure equipment, rotating equipment and material handling equipment
- Pressure welding, overlaying services
- On site and plant installation
- Outsourcing and managing engineering services
- Manpower hiring (welder, pipefitter, boilermaker, mechanic, etc.)
- Resourcing and supplying engineering materials and equipment





Ashflex has experience in designing and manufacturing pressure vessels to local and international standards from various materials such as carbon, low alloy, stainless steel, duplex stainless and/or Inconel materials.



What Ashflex Holdings can **DO FOR YOU**

With our highly flexible organisation model, we are able to offer our clients;

- Quality products and services with high standards of workmanship
- Design and manufacture of large pressure vessels and tanks
- Highly trained workforce comprising of mechanical engineers, project managers, technicians, experienced pipefitters, skilled boilermakers and qualified welders
- Timely delivery
- Competitive pricing



Ashflex has gained a respectable business reputation due to the high standard of quality of the work done here. Along with continued works awarded by the refineries coupled with sustained growth, Ashflex has also been able to provide services to other large engineering companies namely:

- Caltex Refineries
- RMS
- Transfield
- ABB
- BHP
- Jord Bellows
- LA Pressure Welding
- Leighton Group
- ABI Group
- RailCorp
- and many other smaller companies



The Ashflex Workshop



Ashflex's new workshop is located in Prestons with easy access to M5 & M7 and has approximately 2000m² closed area equipped with all the necessary machineries and equipment such as:

- **FOUR** overhead cranes with capacities of **20 TONNES**, **2x10 TONNES** & **6.5 TONNES**





- Guillotine capable of cutting metal up to 2400 mm width x 3 mm thick
- Bending machine capable up to 1800 mm width
- Two column drills and a radial drill
- Two circular saws
- Drop saw up to 460 mm
- Profile punching and cutting to 100 tonne
- Two air compressors
- A 5 and 10 tonne forklift
- Diesel welding generator
- Positional rotator and vessel rollers
- A variety of welding machines inclusive of eight portable welders.
- A 2.5 tonne truck



Relevant Experience



24m Gantry at Cordeaux Dam - RMS

March 2011

This gantry, like the many others that are built at Ashflex for the RMS, was used to mount to variable message signs and traffic monitoring cameras on Picton Rd near Mount Keira Rd.

The gantry spanned from one end of the 3 lane highway to the other end and as such had to be constructed in 5 total pieces and assembled on site.

This structure, complete with a galvanised finish, was completed on time ready for transport and installation as agreed by contract. Ashflex's consistent work output and ability to meet deadlines is why Ashflex remains a preferred vendor with the RMS for over 7 years and what helps to continue this beneficial relationship.



Washout Spools at Kurnell - Caltex

August 2014

Ashflex was proud to be the prime supplier of the works necessary for the shutdown of the Caltex Refinery at Kurnell. This project involved the speedy manufacture of multiple pipe lines, exhausts, feeds and valve points for the monitoring of flows.

Over 100 spools were fabricated for this shutdown, the majority of which required on-site measurements, technical drawings, fabrication and welding inspections, hydro-testing and a galvanised finish.

Ashflex's competitive rates, high manufacturing standards and focus on customer requirements has made Ashflex the preferred supplier for Caltex Refineries for many years.



Portable Pump Skid - Custom Project

August 2014

Ashflex prides itself in being able to meet customer requirements to full specification.

This complex structure with multiple mounting points and lifting lugs was designed to house a pump and generator that could be moved around on-site with ease yet maintain the structural integrity required for operation.

Ashflex also went on to fabricate the pipe spools required for the operation of the pump and facilitated the galvanising of the entire structure and delivery to the site of operation.

The quality of work produced here at Ashflex is what has allowed this company to build valuable long-lasting customer relationships.



Delumper Replacement Project - Transfield

September 2011

This stainless steel pipe assembly served as a purge bin outlet as part of a larger replacement project.

The rest of the structure already existed so meeting dimensional specifications was top priority.

The intricate details of this spool brought about great challenges in terms of manufacturing procedure but our skilled workforce proved that with solid fabrication principles and some innovation no project was too difficult for Ashflex Holdings.

This assembly was fully welded and inspected with full certification in accordance with Ashflex's certified Quality Management System detailed by our own QA/QC Manager.

Quality, WHS and Environmental Management

Quality Management

The company is committed to comply with the certification standard 'AS/NZS ISO 9001-2008: Quality management systems – Requirements', statutory authority requirements and customer specifications at all times. This certification was accredited by the Joint Accreditation System of Australia and New Zealand in respect to those activities covered by JAS-ANZ accreditation.

The scope of our certification includes:

- fabrication of pressure equipment, steel structures and pipe spools
- repair and refurbishment of pressure equipment
- pressure welding, overlaying and hard-facing services

All in ferrous and non-ferrous materials for oil, chemical, petrochemical and power industries.

WHS Management

Safety in the workplace is a top priority here at Ashflex. We encourage personal responsibility towards safe behaviour in the workshop. With multiple members of the staff trained in first aid, caution is always executed in performing any task in the workshop.

Environmental Management

Ashflex Holdings is also committed to the environment by minimising its energy usage and product waste. This is done through a number of venues:

- Skylights for natural light
- Cross-ventilation through the entire workshop
- Metal, paper, plastic and compost recycling



Equipped with experienced personnel, Ashflex has the ability to deliver all goods and services with a focus on customer requirements. Ashflex always aims to exceed expectations by completing jobs correctly, with a quick processing time, full traceability records and competitive rates to ensure customer satisfaction and to build solid business relationships to continue prosperous business transactions in the future.



23-25 Bernera Rd
Prestons NSW 2170

T: (02) 8783 5559
F: (02) 8783 5552

Contact Details

Name

Number

Notes

Date

Event

Ashflex Holdings Pty Ltd

www.ashflex.com.au

ABN: 78 002 393 697

23-25 Bernera Rd
Prestons NSW 2170

T: (02) 8783 5559

F: (02) 8783 5552

E: sales@ashflex.com.au